



To: Police Crime Commissioner

From: Tony Fenton-Jones 10837
T/Performance Analysis Manager

Version 4.0 : Wednesday, 22 March
2017



**SURREY
POLICE**
With you, making
Surrey safer

www.surrey.police.uk

Quarterly Crime Trends Report

This report highlights the latest trends in crime and positive outcomes for Surrey Police over the last three years across various defined crime types. The appendices at the back of the report provide a useful breakdown of changes in crime and positive outcomes across the crime types.

- Appendix A - Crime recorded by crime type
- Appendix B – Volume of positive outcomes recorded by crime type
- Appendix C - Positive Outcome Rate by crime type
- Appendix D - Change in recorded crime by crime type and location
- Appendix E - Change in volume of positive outcomes by crime type and location
- Appendix F - Positive Outcome Rate Point Change by crime type and location

Definitions

Recorded crimes are offences that fall within the current home office counting rules (HOCR).

In April 2015, the home office introduced an outcomes framework which replaced the existing detections framework. The purpose was for forces to determine the best outcome for an offence. Surrey Police have maintained “positive outcomes” which is the equivalent of the old detections with the inclusion of community resolutions.

Positive outcomes are offences within the HOCR which results in one of the following outcomes:

- CHARGED
- SUMMONSED/POSTAL REQUISITION
- CAUTION
- TIC (TAKEN INTO CONSIDERATION)
- PENALTY NOTICE FOR DISORDER
- CANNABIS WARNING
- COMMUNITY RESOLUTION

Positive outcome rates are based on the volumes of positive outcomes in a given period divided by the volume of crimes in the same period. Therefore it is possible to have over 100% for positive outcome rate as there could be more positive outcomes in a period than crimes recorded.

The charts in the highlighted exceptions show a yellow band. This represents 1.5 standard deviations either side of the average for the period. Values outside of this range could be said to be statistically significant – either for the better or worse.

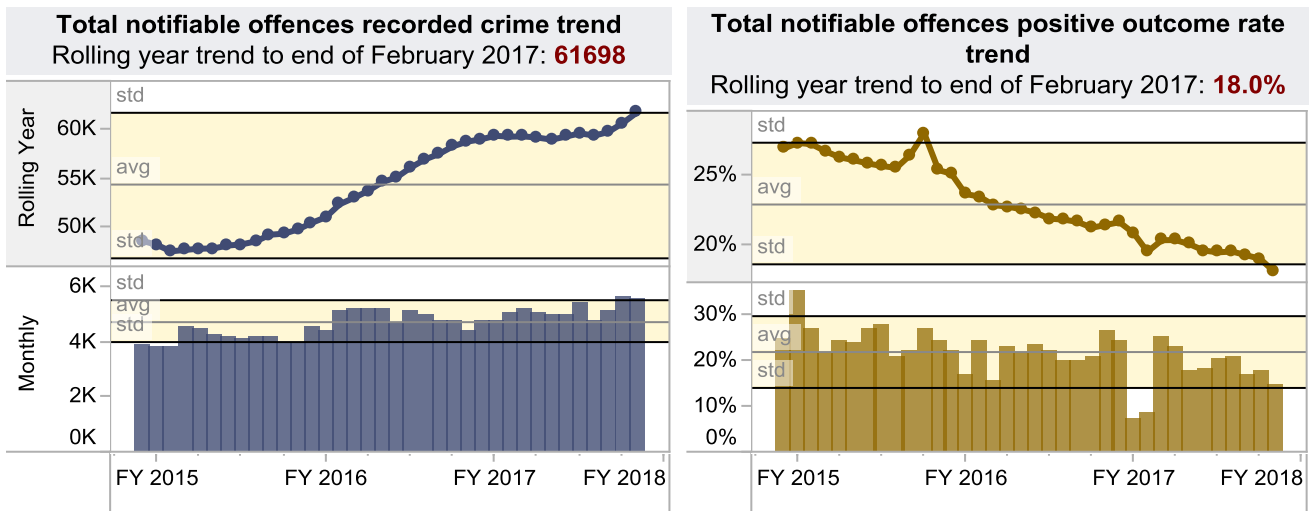
The x-axis represent the financial years – with for example “FY 2017” depicting the “2016/2017” year.

Highlighted exceptions

Total Notifiable Offences

There has been a noticeable increase in recorded crime over the last three years. The increase comes in part from the introduction in April 2015 of two new offences within the **harassment** category of the home office counting rules. These are “Disclosure (including on the internet) of private sexual photographs and films with the intent to cause distress or anxiety” and “Sending letters (including emails) with intent to cause distress or anxiety”. However, following improvements in crime data integrity there has also been an increase in offences falling into category of “Public fear, alarm or distress offences” – these offences would have previously have been closed as anti-social behaviour incidents.

Total notifiable offences



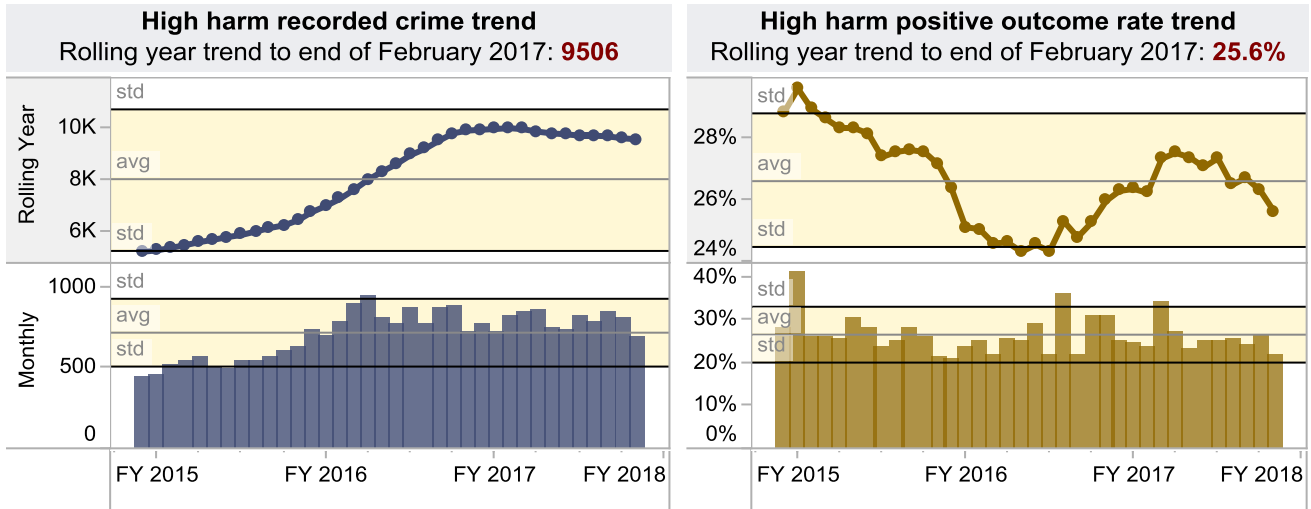
High harm.

High Harm is based on the following definition; Serious Sexual; Violence with and without injury with Domestic/DASH marker; Child Abuse (crimes flagged with a child abuse marker); Hate (crimes flagged with a hate crime marker).

High harm is a current performance aspiration for Surrey Police and therefore the force has been monitoring this category every month over 2016/2017. The charts below show that there has been an increasing trend over the last three years which plateaued around a year ago. This increase relates to the Violent DA element of high harm when the Home Office Counting Rules introduced two new offences. These are “Disclosure (including on the internet) of private sexual photographs and films with the intent to cause distress or anxiety” and “Sending letters (including emails) with intent to cause distress or anxiety”.

The rolling year positive outcome rate is starting to show signs of a decline and with last seven monthly positive outcomes rates below the average this could indicate further deterioration in performance for this aspiration.

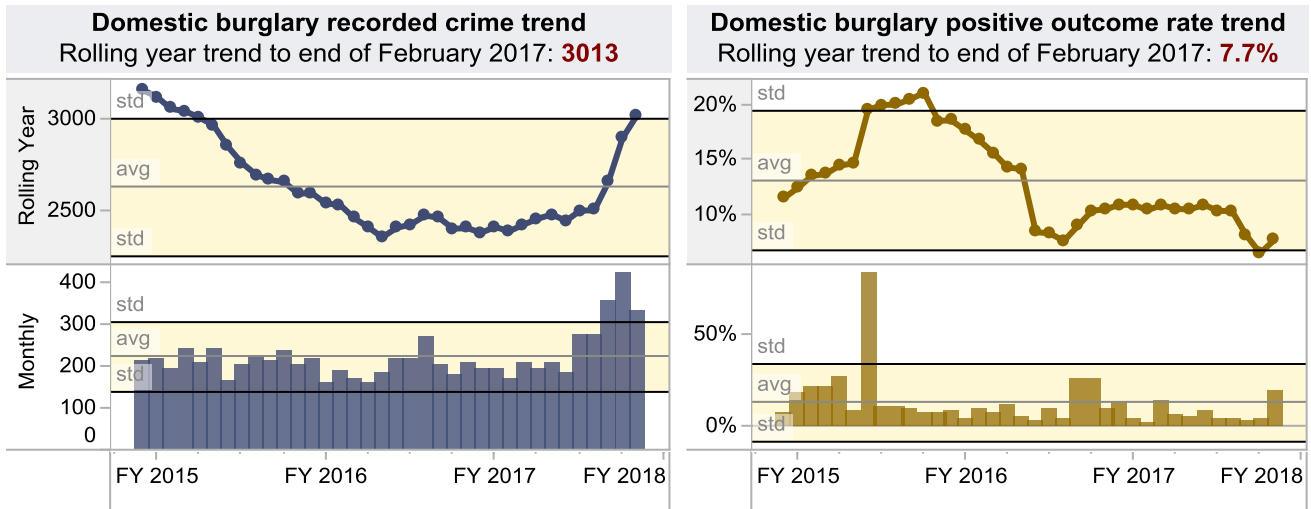
High harm



Domestic burglary.

The charts below show that over the last three months Surrey Police has recorded a statistically significant increase in the volumes of domestic burglaries. This has resulted in the force recording a 12 month rolling total of 3,013 at the end of February 2017. The highest since July 2014. As might be expected the positive outcome rate performance has dropped with this increase in recorded crime. A slight improvement in the month of February gives the force a rolling 12 month performance of 7.7% positive outcome rate.

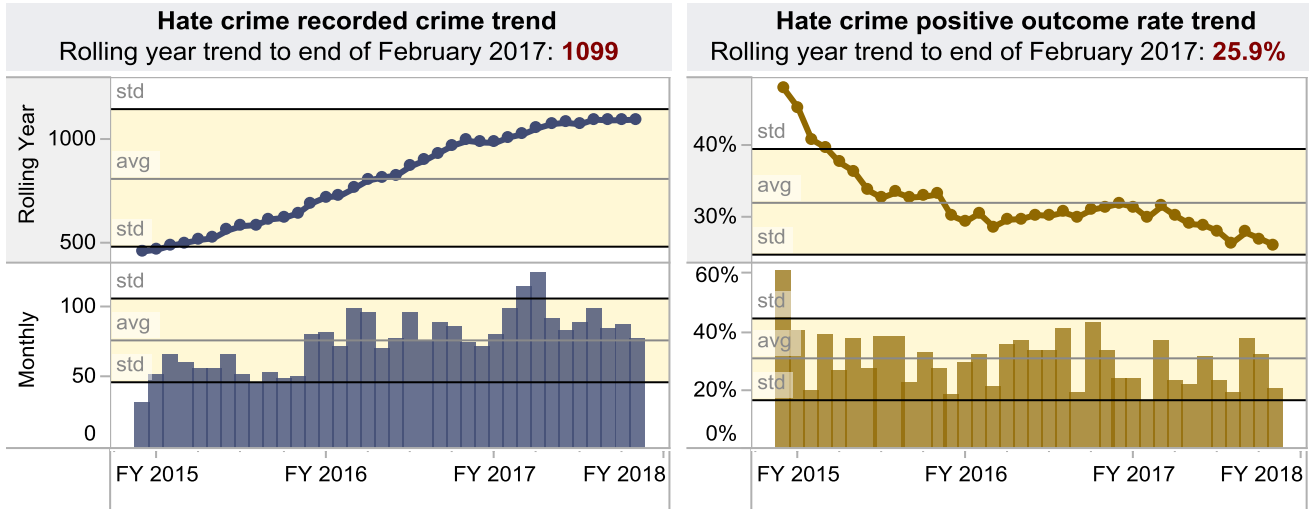
Domestic burglary



Hate crime.

Hate crime has seen increased reporting over the last three years with a noticeable monthly spikes around the EU referendum in 2016. It is positive that the public are coming forward to report these types of crimes unfortunately the positive outcome rate has not increased with the crimes recorded.

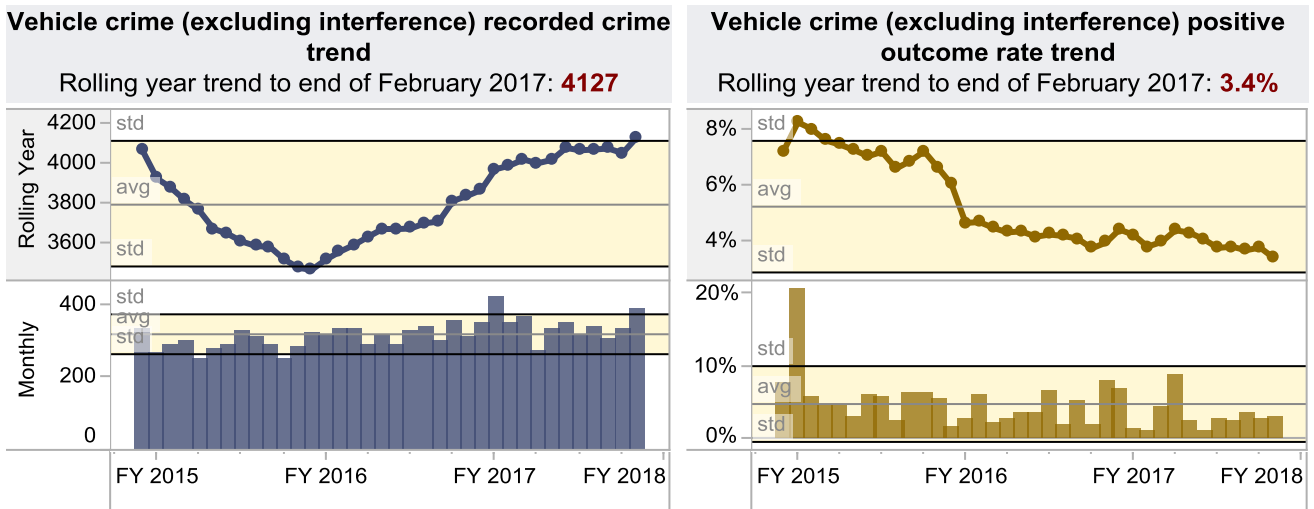
Hate crime



Vehicle crime (excluding interference).

At one time vehicle crime was a priority for Surrey Police. Over the last two years there has been a steady increase in volumes recorded – the latest 12 months is the highest recorded in Surrey over the last three years. Positive outcome rate for Vehicle crime has reached a low of 3.4%.

Vehicle crime (excluding interference)



Violent crime.

As mentioned for total notifiable offences. The increase in violent offences comes in part from the introduction in April 2015 of two new offences within the harassment category of the home office counting rules. Also, following improvements in crime data integrity in summer 2015 there has also been an increase in offences falling into category of “Public fear, alarm or distress offences” – these offences would have previously have been closed as anti-social behaviour incidents.

Official
Appendix A
Crime recorded by crime type
 Rolling 12 month comparison

Category	Crime Latest 12 months	Crime Previous 12 months	Crime change	%age Crime change	Rolling year trend to end of February 2017		
High harm	9,506	9,838	-332	-3.4%	10K	-500	
Violent DA	5,962	6,192	-230	-3.7%	6K	600	
Violence with injury DA	2,088	2,198	-110	-5.0%	2000	-200	
Violence without injury DA	3,874	3,994	-120	-3.0%	4000	400	
Hate crime	1,099	995	104	10.5%	1000	-100	
Serious sexual	1,338	1,365	-27	-2.0%	1000	150	
Rape	520	567	-47	-8.3%	500	60	
Child abuse	1,902	2,196	-294	-13.4%	2K	-200	
Robbery	281	263	18	6.8%	280	30	
Domestic burglary	3,013	2,400	613	25.5%	3000	-400	
TNO Violent	23,369	20,104	3,265	16.2%	20K	2K	
Violent Non-DA	17,407	13,912	3,495	25.1%	15K	1500	
Violence with injury	6,181	6,034	147	2.4%	6K	600	
Violence with injury Non-DA	4,098	3,908	190	4.9%	4K	400	
Violence without injury	17,185	13,855	3,330	24.0%	15K	-1500	
Harassment	9,279	6,785	2,494	36.8%	8K	-500	
Violence without injury Non-DA	13,309	10,004	3,305	33.0%	10K	-1000	
Non-domestic burglary	2,702	3,107	-405	-13.0%	3500	-300	
Theft (other than vehicle) & handling stolen goods	13,480	13,844	-364	-2.6%	14000	-1000	
Vehicle crime (excluding interference)	4,127	3,835	292	7.6%	4000	-400	
Vehicle interference and tampering	426	548	-122	-22.3%	500	60	
Other criminal offences	1,616	1,543	73	4.7%	1600	200	
Other sexual offences	389	360	29	8.1%	400	-40	
Criminal damage	9,014	9,167	-153	-1.7%	9000	-500	
Total notifiable offences	61,698	58,712	2,986	5.1%	60K	-4K	
Total notifiable domestic abuse offences	7,383	7,599	-216	-2.8%	7K	-600	
					FY 2015	FY 2016	FY 2017

Official
Appendix B
Volume of positive outcomes recorded by crime type
 Rolling 12 month comparison

Category	Positive Outcome Latest 12 months	Positive Outcome Previous 12 months	Positive Outcome change	%age Positive Outcome change	Rolling year trend to end of February 2017	
High harm	2,435	2,555	-120	-4.7%	2500	300
Violent DA	1,557	1,726	-169	-9.8%	1500	200
Violence with injury DA	672	747	-75	-10.0%	800	80
Violence without injury DA	885	979	-94	-9.6%	1000	100
Hate crime	285	311	-26	-8.4%	300	40
Serious sexual	219	209	10	4.8%	200	40
Rape	62	71	-9	-12.7%	70	15
Child abuse	594	495	99	20.0%	600	80
Robbery	34	65	-31	-47.7%	60	10
Domestic burglary	232	252	-20	-7.9%	500	100
TNO Violent	5,154	5,913	-759	-12.8%	6K	600
Violent Non-DA	3,597	4,187	-590	-14.1%	4000	400
Violence with injury	1,765	2,034	-269	-13.2%	2000	200
Violence with injury Non-DA	1,088	1,359	-271	-19.9%	1400	150
Violence without injury	3,372	3,658	-286	-7.8%	3500	400
Harassment	1,619	1,622	-3	-0.2%	1600	200
Violence without injury Non-DA	2,509	2,828	-319	-11.3%	2500	300
Non-domestic burglary	91	143	-52	-36.4%	250	40
Theft (other than vehicle) & handling stolen goods	1,899	2,260	-361	-16.0%	2500	300
Vehicle crime (excluding interference)	139	151	-12	-7.9%	300	40
Vehicle interference and tampering	21	29	-8	-27.6%	30	6
Other criminal offences	619	542	77	14.2%	600	80
Other sexual offences	86	66	20	30.3%	80	15
Criminal damage	910	1,026	-116	-11.3%	1100	100
Total notifiable offences	11,123	12,570	-1,447	-11.5%	14K	1000
Total notifiable domestic abuse offences	1,976	2,177	-201	-9.2%	2000	200

FY 2016 FY 2017

Official
Appendix C
Positive Outcome Rate by crime type
 Rolling 12 month comparison

Category	Positive Outcome Rate Latest 12 months	Positive Outcome Rate Previous 12 months	Positive Outcome Rate Point Change		Rolling year trend to end of February 2017	
High harm	25.6%	26.0%	-0.4%	30.0%		40.0%
Violent DA	26.1%	27.9%	-1.8%	28.0%		40.0%
Violence with injury DA	32.2%	34.0%	-1.8%	36.0%		50.0%
Violence without injury DA	22.8%	24.5%	-1.7%	30.0%		40.0%
Hate crime	25.9%	31.3%	-5.3%	26.0%		40.0%
Serious sexual	16.4%	15.3%	1.1%	20.0%		10.0%
Rape	11.9%	12.5%	-0.6%	20.0%		30.0%
Child abuse	31.2%	22.5%	8.7%	40.0%		100.0%
Robbery	12.1%	24.7%	-12.6%	25.0%		60.0%
Domestic burglary	7.7%	10.5%	-2.8%	20.0%		80.0%
TNO Violent	22.1%	29.4%	-7.4%	40.0%		50.0%
Violent Non-DA	20.7%	30.1%	-9.4%	25.0%		20.0%
Violence with injury	28.6%	33.7%	-5.2%	40.0%		40.0%
Violence with injury Non-DA	26.5%	34.8%	-8.2%	35.0%		50.0%
Violence without injury	19.6%	26.4%	-6.8%	30.0%		30.0%
Harassment	17.4%	23.9%	-6.5%	40.0%		40.0%
Violence without injury Non-DA	18.9%	28.3%	-9.4%	40.0%		60.0%
Non-domestic burglary	3.4%	4.6%	-1.2%	8.0%		15.0%
Theft (other than vehicle) & handling stolen goods	14.1%	16.3%	-2.2%	20.0%		30.0%
Vehicle crime (excluding interference)	3.4%	3.9%	-0.6%	8.0%		20.0%
Vehicle interference and tampering	4.9%	5.3%	-0.4%	6.0%		15.0%
Other criminal offences	38.3%	35.1%	3.2%	50.0%		60.0%
Other sexual offences	22.1%	18.3%	3.8%	40.0%		60.0%
Criminal damage	10.1%	11.2%	-1.1%	20.0%		20.0%
Total notifiable offences	18.0%	21.4%	-3.4%	25.0%		30.0%
Total notifiable domestic abuse offences	26.8%	28.6%	-1.9%	30.0%		40.0%

FY 2016 FY 2017

Official
Appendix D

Change in recorded crime by crime type and location

Comparison of 12 months to February 2017 compared to 12 months to February 2016

Category	East					Total	North			Total	West					Total	Force
	EP	MV	RB	TD	RD		EL	RM	SL		GD	SH	WK	WV			
High harm	-4.3%	+6.6%	+2.8%	-5.2%	+0.5%	-15.3%	+0.9%	+1.5%	-5.1%	-6.3%	-2.2%	+1.4%	-13.8%	-5.3%	-3.4%		
Violent DA	+0.5%	+7.9%	+2.5%	-9.7%	+0.4%	-15.9%	-4.7%	+2.1%	-6.8%	-7.7%	+2.4%	+2.7%	-15.0%	-4.9%	-3.7%		
Violence with injury DA	+4.4%	+7.6%	+11.7%	-12.4%	+4.2%	-18.4%	-11.0%	+4.2%	-8.7%	-4.9%	-11.8%	-1.5%	-23.3%	-9.6%	-5.0%		
Violence without injury DA	-1.6%	+8.1%	-1.8%	-8.2%	-1.4%	-14.6%	-1.2%	+0.9%	-5.7%	-9.3%	+12.2%	+5.2%	-10.3%	-2.0%	-3.0%		
Hate crime	-17.0%	+25.0%	+40.0%	+4.4%	+14.4%	+13.6%	+30.0%	+13.9%	+18.0%	+7.5%	-4.8%	-6.2%	+11.1%	+1.5%	+10.5%		
Serious sexual	+25.8%	+12.0%	+5.4%	+56.9%	+19.0%	-16.8%	-14.5%	+11.6%	-7.1%	-12.7%	-12.5%	-7.1%	-15.2%	-11.9%	-2.0%		
Rape	+17.4%	+11.4%	-5.6%	+37.5%	+8.5%	-15.9%	-22.7%	+19.6%	-7.2%	+22.5%	-37.2%	-47.4%	-24.2%	-18.8%	-8.3%		
Child abuse	-23.7%	+0.8%	-20.8%	+3.9%	-12.9%	-20.1%	-2.3%	-20.5%	-15.8%	-12.9%	-20.6%	+9.2%	-23.6%	-11.8%	-13.4%		
Robbery	+41.4%	+41.7%	-7.7%	-37.0%	+3.7%	+34.8%	+45.5%	+23.1%	+33.8%	-30.0%	+23.5%	-4.8%	-23.5%	-11.8%	+6.8%		
Domestic burglary	+40.5%	+63.4%	+9.3%	+7.3%	+24.4%	+39.0%	+22.6%	+37.3%	+34.0%	+13.0%	+20.3%	+13.5%	+25.3%	+17.3%	+25.5%		
TNO Violent	+7.4%	+26.5%	+20.4%	+10.0%	+16.6%	+8.7%	+20.9%	+9.6%	+12.4%	+19.9%	+22.3%	+25.7%	+7.5%	+19.1%	+16.2%		
Violent Non-DA	+9.8%	+34.8%	+29.0%	+20.5%	+23.8%	+21.9%	+33.2%	+12.9%	+21.7%	+30.0%	+31.0%	+35.0%	+18.1%	+29.0%	+25.1%		
Violence with injury	+3.2%	+8.7%	+6.0%	-3.1%	+4.2%	-7.6%	+7.0%	-1.0%	-1.4%	+8.8%	-0.2%	+11.5%	-10.1%	+3.8%	+2.4%		
Violence with injury Non-DA	-1.1%	+3.8%	+4.6%	+2.2%	+2.9%	+1.0%	+11.1%	-4.7%	+1.7%	+14.1%	+4.9%	+14.6%	-4.8%	+8.8%	+4.9%		
Violence without injury	+12.8%	+38.2%	+27.5%	+18.6%	+24.2%	+15.4%	+30.4%	+15.7%	+19.6%	+24.8%	+36.9%	+34.5%	+17.3%	+27.6%	+24.0%		
Harassment	+22.0%	+51.4%	+45.3%	+40.0%	+40.1%	+29.7%	+38.4%	+27.4%	+31.2%	+33.9%	+51.9%	+48.3%	+26.8%	+38.6%	+36.8%		
Violence without injury Non-DA	+13.3%	+47.9%	+39.9%	+27.4%	+32.2%	+29.6%	+40.8%	+18.9%	+28.7%	+36.2%	+43.3%	+43.9%	+26.7%	+37.3%	+33.0%		
Non-domestic burglary	-1.8%	-5.6%	-16.6%	-26.6%	-15.6%	-10.2%	-22.0%	+22.5%	-7.4%	-19.6%	-23.6%	-21.9%	+3.6%	-14.3%	-13.0%		
Theft (other than vehicle) & handling stolen go..	+8.6%	+8.6%	-8.3%	-15.0%	-3.2%	+1.8%	+4.1%	-9.3%	-1.4%	-1.8%	-2.8%	-9.2%	+1.7%	-3.1%	-2.6%		
Vehicle crime (excluding interference)	+58.8%	+42.3%	+22.0%	-15.2%	+18.2%	+19.5%	-2.0%	-0.2%	+6.0%	-1.7%	-8.9%	-8.0%	-1.7%	-4.7%	+7.6%		
Vehicle interference and tampering	+23.5%	+13.0%	-15.1%	-53.3%	-20.2%	-8.2%	-26.8%	-21.4%	-18.5%	-31.7%	-23.8%	-22.5%	-46.4%	-30.8%	-22.3%		
Other criminal offences	+30.9%	+7.7%	-7.6%	-0.9%	+1.8%	-3.1%	+14.5%	-0.6%	+2.4%	+19.4%	-20.6%	+52.5%	-16.8%	+9.2%	+4.7%		
Other sexual offences	-5.0%	-33.3%	+11.1%	+33.3%	-0.9%	+21.6%	+8.0%	-24.3%	+3.5%	+27.8%	+40.0%	+8.3%	+6.3%	+19.0%	+8.1%		
Criminal damage	-17.4%	+1.6%	+4.6%	-7.9%	-4.1%	-3.4%	-10.6%	+7.8%	-1.7%	+2.7%	-6.6%	-6.0%	+12.2%	+1.0%	-1.7%		
Total notifiable offences	+8.3%	+16.6%	+6.8%	-6.9%	+5.4%	+4.7%	+5.8%	+3.6%	+4.7%	+5.0%	+2.8%	+6.6%	+5.7%	+5.2%	+5.1%		
Total notifiable domestic abuse offences	-3.3%	+8.3%	+4.1%	-8.6%	+0.7%	-12.1%	-5.2%	+1.8%	-5.5%	-4.3%	+1.9%	+2.8%	-15.0%	-3.9%	-2.8%		

Appendix F

Positive Outcome Rate Point Change by crime type and location

Comparison of 12 months to February 2017 compared to 12 months to February 2016

Category	East					Total	North				Total	West				Total	Force
	EP	MV	RB	TD			EL	RM	SL			GD	SH	WK	WV		
High harm	+5.2%	-0.8%	-1.2%	+8.0%		+1.9%	-2.3%	-5.7%	+0.2%		-2.3%	+1.2%	-5.3%	-1.9%	+1.2%	-0.8%	-0.4%
Violent DA	+6.8%	+0.9%	+0.2%	+6.0%		+2.7%	-2.8%	-9.3%	-4.6%		-5.2%	-0.5%	-10.6%	-3.4%	+0.3%	-3.0%	-1.8%
Violence with injury DA	+7.3%	-3.7%	-1.2%	+11.4%		+2.2%	-7.9%	-11.2%	-3.8%		-7.5%	+5.4%	-12.0%	-4.1%	+6.4%	-0.4%	-1.8%
Violence without injury DA	+6.4%	+3.2%	+0.8%	+3.4%		+2.8%	+0.1%	-7.9%	-5.1%		-3.9%	-4.3%	-8.1%	-2.7%	-2.4%	-4.3%	-1.7%
Hate crime	+11.2%	-21.4%	-6.5%	+7.8%		-1.5%	-4.4%	-10.7%	-1.8%		-4.9%	-6.9%	-11.6%	-12.7%	-2.0%	-8.6%	-5.3%
Serious sexual	-10.1%	-4.9%	-5.6%	+9.4%		-2.8%	+1.3%	+7.0%	+6.0%		+4.9%	-0.2%	+8.3%	-2.7%	+1.0%	+0.8%	+1.1%
Rape	+1.8%	-11.7%	+2.2%	-14.8%		-4.1%	+3.1%	+13.5%	+9.1%		+7.9%	-15.1%	+6.9%	+7.1%	-3.8%	-3.7%	-0.6%
Child abuse	+6.9%	+12.2%	+2.8%	+24.1%		+9.8%	-2.2%	+13.1%	+17.6%		+8.7%	+9.4%	+8.6%	+6.4%	+5.8%	+7.8%	+8.7%
Robbery	-17.8%	-58.3%	-17.5%	-3.1%		-19.0%	-22.0%	-2.8%	-13.7%		-13.1%	+2.9%	-4.5%	+1.7%	-29.4%	-3.8%	-12.6%
Domestic burglary	-2.8%	+0.6%	+7.5%	+2.0%		+2.2%	-3.7%	-5.2%	-10.8%		-6.2%	-5.7%	-4.8%	+1.7%	-8.8%	-4.2%	-2.8%
TNO Violent	-1.8%	-10.2%	-7.1%	-1.6%		-5.5%	-4.9%	-10.1%	-9.1%		-7.9%	-7.5%	-12.3%	-8.6%	-8.1%	-8.7%	-7.4%
Violent Non-DA	-4.7%	-14.4%	-10.4%	-4.3%		-8.7%	-5.1%	-10.1%	-10.9%		-8.7%	-9.9%	-12.9%	-10.1%	-11.1%	-10.7%	-9.4%
Violence with injury	-0.5%	-6.7%	-6.1%	+0.5%		-3.9%	-3.0%	-10.2%	-7.5%		-6.6%	-2.1%	-11.8%	-6.2%	-2.8%	-5.2%	-5.2%
Violence with injury Non-DA	-4.1%	-8.0%	-13.0%	-2.8%		-8.5%	-2.8%	-10.6%	-14.1%		-9.0%	-4.4%	-12.8%	-7.7%	-7.7%	-7.5%	-8.2%
Violence without injury	-1.6%	-10.4%	-5.0%	-2.7%		-4.7%	-2.9%	-8.4%	-6.9%		-5.9%	-9.9%	-10.9%	-8.4%	-9.1%	-9.5%	-6.8%
Harassment	-1.4%	-7.6%	-1.1%	-1.1%		-2.4%	-5.7%	-7.5%	-5.7%		-6.2%	-12.6%	-12.2%	-7.8%	-8.4%	-10.4%	-6.5%
Violence without injury Non-DA	-4.7%	-16.5%	-8.7%	-4.3%		-8.3%	-5.4%	-9.5%	-9.4%		-8.1%	-11.7%	-12.3%	-10.9%	-11.7%	-11.5%	-9.4%
Non-domestic burglary	+3.1%	-0.6%	-1.2%	-0.5%		-0.2%	+0.3%	-3.3%	-6.7%		-2.6%	-3.9%	-0.4%	+1.9%	-0.8%	-1.3%	-1.2%
Theft (other than vehicle) & handling stolen go..	-2.2%	-1.0%	-2.9%	+0.5%		-1.5%	-1.8%	-0.6%	-6.9%		-3.3%	-1.6%	-4.7%	-0.9%	-1.1%	-2.0%	-2.2%
Vehicle crime (excluding interference)	+1.4%	+1.3%	-3.9%	-1.3%		-1.1%	-2.7%	-1.7%	+0.2%		-1.2%	-0.5%	+5.2%	-2.3%	+4.3%	+1.1%	-0.6%
Vehicle interference and tampering	-2.3%	+0.0%	+0.3%	+3.4%		+0.0%	-2.0%	+3.3%	-8.4%		-3.1%	+5.8%	+6.3%	+2.2%	-7.1%	+2.4%	-0.4%
Other criminal offences	-14.5%	-6.4%	+10.3%	+14.0%		+4.4%	+12.5%	+11.8%	-0.4%		+7.5%	-8.4%	-2.3%	-2.7%	+10.3%	-1.5%	+3.2%
Other sexual offences	-9.2%	+43.3%	-24.2%	+33.3%		+3.0%	-5.7%	+13.9%	+16.9%		+4.7%	+7.3%	-19.0%	+11.5%	+1.5%	+3.7%	+3.8%
Criminal damage	+1.4%	-3.3%	-2.2%	+0.6%		-0.8%	-5.2%	-0.4%	-0.9%		-2.5%	+0.8%	-3.5%	+1.4%	-1.5%	-0.4%	-1.1%
Total notifiable offences	-3.2%	-4.4%	-3.4%	+0.7%		-2.4%	-3.1%	-3.3%	-6.8%		-4.4%	-3.7%	-5.7%	-1.5%	-3.5%	-3.5%	-3.4%
Total notifiable domestic abuse offences	+6.3%	-0.6%	-0.3%	+5.2%		+1.9%	-4.7%	-8.0%	-4.3%		-5.4%	-1.2%	-10.7%	-2.5%	+2.7%	-2.5%	-1.9%

Official Appendix E

Change in volume of positive outcomes by crime type and location Comparison of 12 months to February 2017 compared to 12 months to February 2016 (Rounded to whole place)

Category	East					Total	North				Total	West				Total	Force
	EP	NV	RB	TD	EL		RM	SL	GD	SH		WK	WV				
High harm	+17.0%	+3.4%	-1.6%	+23.8%	+7.8%	-22.8%	-19.7%	+2.2%	-13.4%	-1.7%	-20.1%	-5.8%	-9.4%	-8.2%	-4.7%		
Violent DA	+30.3%	+11.3%	+3.4%	+9.5%	+10.6%	-24.4%	-33.7%	-14.2%	-23.7%	-9.4%	-30.9%	-9.0%	-14.0%	-15.1%	-9.8%		
Violence with injury DA	+30.8%	-5.4%	+7.1%	+17.6%	+11.8%	-34.2%	-37.5%	-7.6%	-27.1%	+13.5%	-35.5%	-12.5%	-5.9%	-10.6%	-10.0%		
Violence without injury DA	+30.0%	+21.7%	+1.4%	+4.0%	+9.9%	-14.2%	-30.8%	-18.9%	-20.8%	-23.9%	-25.0%	-6.0%	-19.2%	-18.6%	-9.6%		
Hate crime	+22.7%	-36.8%	+14.6%	+50.0%	+8.9%	-4.0%	-11.1%	+5.7%	-2.3%	-14.0%	-36.4%	-42.9%	+5.0%	-23.9%	-8.4%		
Serious sexual	-26.7%	-23.1%	-22.2%	+130.8%	+2.6%	-6.7%	+35.7%	+62.5%	+31.1%	-13.5%	+31.3%	-25.0%	-7.1%	-6.9%	+4.8%		
Rape	+33.3%	-80.0%	+11.1%	-60.0%	-22.7%	+25.0%	+42.9%	+120.0%	+62.5%	-64.7%	+0.0%	+0.0%	-60.0%	-42.4%	-12.7%		
Child abuse	+0.0%	+64.0%	-12.8%	+110.0%	+22.4%	-27.1%	+60.0%	+42.6%	+15.7%	+28.6%	+17.2%	+39.1%	-2.4%	+21.7%	+20.0%		
Robbery	-50.0%	-100.0%	-77.8%	-50.0%	-71.4%	-27.3%	+0.0%	-50.0%	-31.6%	+0.0%	+0.0%	+0.0%	-100.0%	-27.8%	-47.7%		
Domestic burglary	-16.7%	+77.8%	+192.3%	+27.3%	+64.3%	-10.5%	-34.6%	-55.0%	-33.7%	-27.8%	-26.7%	+46.2%	-46.4%	-22.8%	-7.9%		
TNO Violent	+0.2%	-15.3%	-6.3%	+3.5%	-4.9%	-13.0%	-21.8%	-24.6%	-20.0%	-7.7%	-23.3%	-10.7%	-24.8%	-14.7%	-12.8%		
Violent Non-DA	-8.0%	-25.3%	-9.8%	+0.0%	-10.7%	-5.5%	-15.5%	-29.0%	-18.0%	-7.2%	-20.0%	-11.3%	-29.6%	-14.6%	-14.1%		
Violence with injury	+1.6%	-15.1%	-11.7%	-1.6%	-7.9%	-16.5%	-24.7%	-22.7%	-21.0%	+1.9%	-29.6%	-9.6%	-18.4%	-12.1%	-13.2%		
Violence with injury Non-DA	-12.8%	-23.6%	-27.3%	-6.8%	-20.9%	-9.4%	-23.7%	-40.3%	-26.2%	+0.0%	-29.7%	-14.2%	-27.7%	-14.9%	-19.9%		
Violence without injury	+5.6%	-9.8%	+4.9%	+5.2%	+2.3%	-1.3%	-13.5%	-16.5%	-10.8%	-13.7%	-15.9%	-6.3%	-25.7%	-14.6%	-7.8%		
Harassment	+15.0%	+5.2%	+38.1%	+32.2%	+25.2%	-11.2%	-5.9%	-6.8%	-7.9%	-17.3%	-14.5%	+1.4%	-21.9%	-13.8%	-0.2%		
Violence without injury Non-DA	-6.0%	-25.9%	+1.0%	+3.6%	-5.5%	-3.6%	-11.8%	-23.6%	-14.1%	-10.1%	-14.2%	-10.0%	-30.5%	-14.4%	-11.3%		
Non-domestic burglary	+125.0%	-28.6%	-33.3%	-37.5%	-20.0%	+0.0%	-68.8%	-78.6%	-57.9%	-63.0%	-30.0%	+10.0%	-15.4%	-35.0%	-36.4%		
Theft (other than vehicle) & handling stolen goods	-5.4%	+0.0%	-22.8%	-9.6%	-13.3%	-16.6%	-0.8%	-41.1%	-24.7%	-9.9%	-21.8%	-12.8%	-10.1%	-13.1%	-16.0%		
Vehicle crime (excluding interference)	+166.7%	+100.0%	-53.6%	-40.9%	-12.9%	-33.3%	-60.0%	+7.1%	-27.5%	-15.4%	+128.6%	-58.3%	+166.7%	+26.3%	-7.9%		
Vehicle interference and tampering	-50.0%		-12.5%	-20.0%	-20.0%	-100.0%		-83.3%	-71.4%	+50.0%		+0.0%	-100.0%	+0.0%	-27.6%		
Other criminal offences	-9.4%	-13.3%	+23.0%	+51.6%	+15.6%	+47.4%	+58.3%	-1.6%	+28.1%	-1.0%	-25.5%	+43.4%	+10.8%	+5.4%	+14.2%		
Other sexual offences	-40.0%	+400.0%	-52.6%	+700.0%	+11.1%	-28.6%	+133.3%	+133.3%	+46.2%	+100.0%	-40.0%	+83.3%	+12.5%	+42.3%	+30.3%		
Criminal damage	-7.5%	-22.0%	-14.0%	+1.4%	-11.5%	-39.4%	-13.6%	-2.6%	-21.8%	+9.5%	-30.0%	+7.8%	-6.2%	-2.5%	-11.3%		
Total notifiable offences	-7.7%	-8.1%	-8.1%	-2.7%	-7.0%	-13.9%	-11.4%	-27.3%	-18.4%	-10.2%	-19.6%	-0.2%	-15.7%	-10.5%	-11.5%		
Total notifiable domestic abuse offences	+21.7%	+6.2%	+2.7%	+7.3%	+7.7%	-26.2%	-29.4%	-13.0%	-22.7%	-8.3%	-30.5%	-5.8%	-5.8%	-12.2%	-9.2%		